

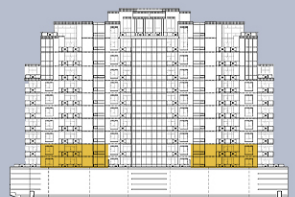
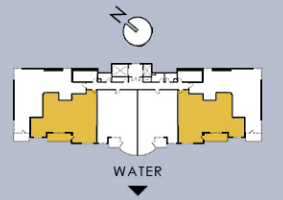
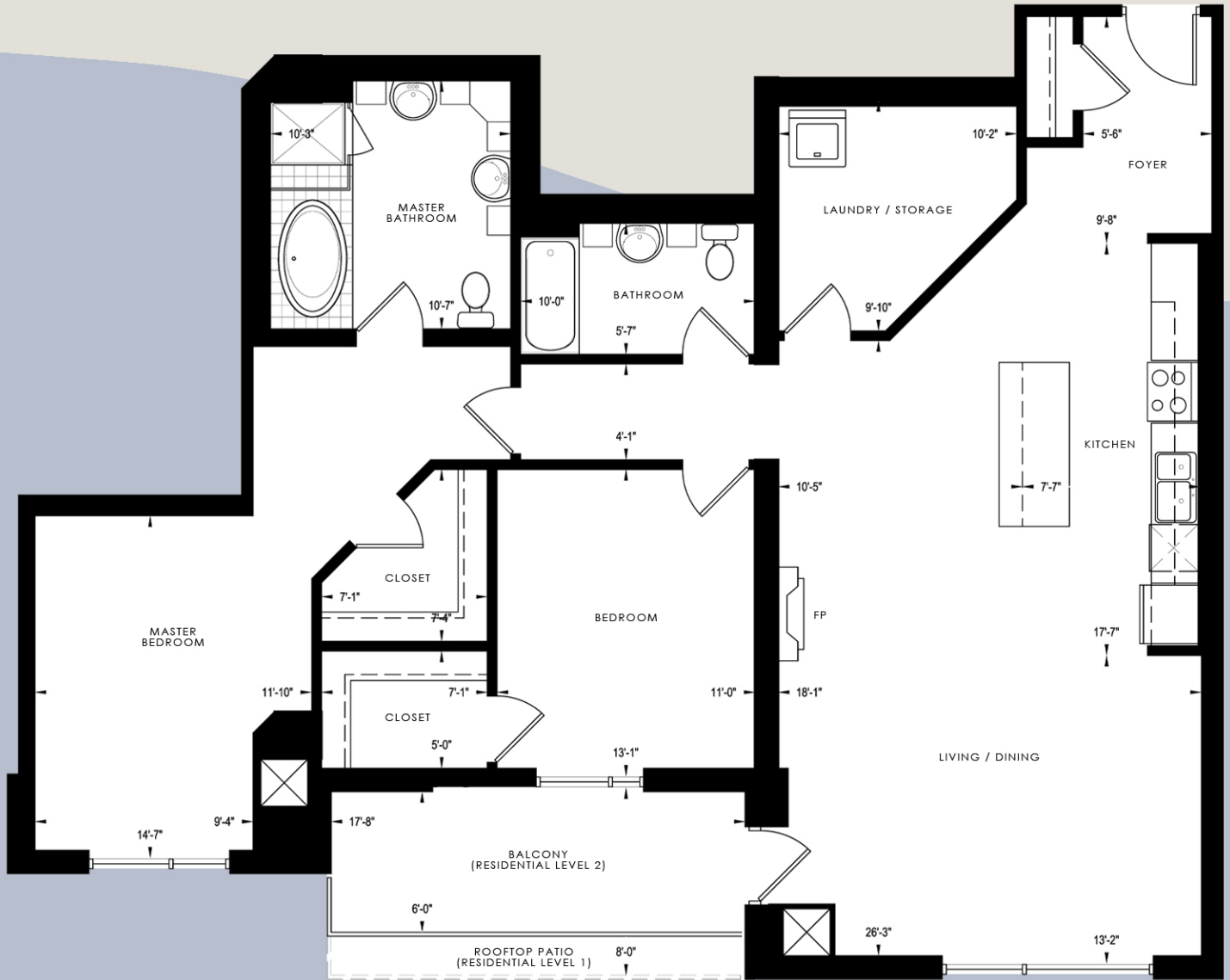


# THE PASQUALE WATERFRONT PLACE

## THE ABRUZZO RESIDENTIAL LEVELS 1 & 2

2 Bedroom, 2 Bath  
Living: 1,565 square feet

Abruzzo is a remote, mountainous region enhanced by numerous historic castles. It is often thought of the picture postcard of the north. The area, which is sparsely populated, is filled with untouched beauty. A home filled with peace, tranquility and unspoiled natural beauty.



**Note:** Floor Plans are not to scale. Actual usable floor area may vary from the stated floor area. All dimensions are approximate and subject to normal construction variances and tolerances. The Complete offering terms are in an Offering Plan available from Sponsor. File No. CD070334.

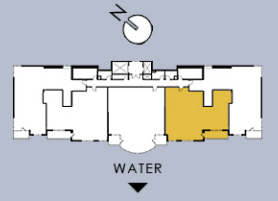
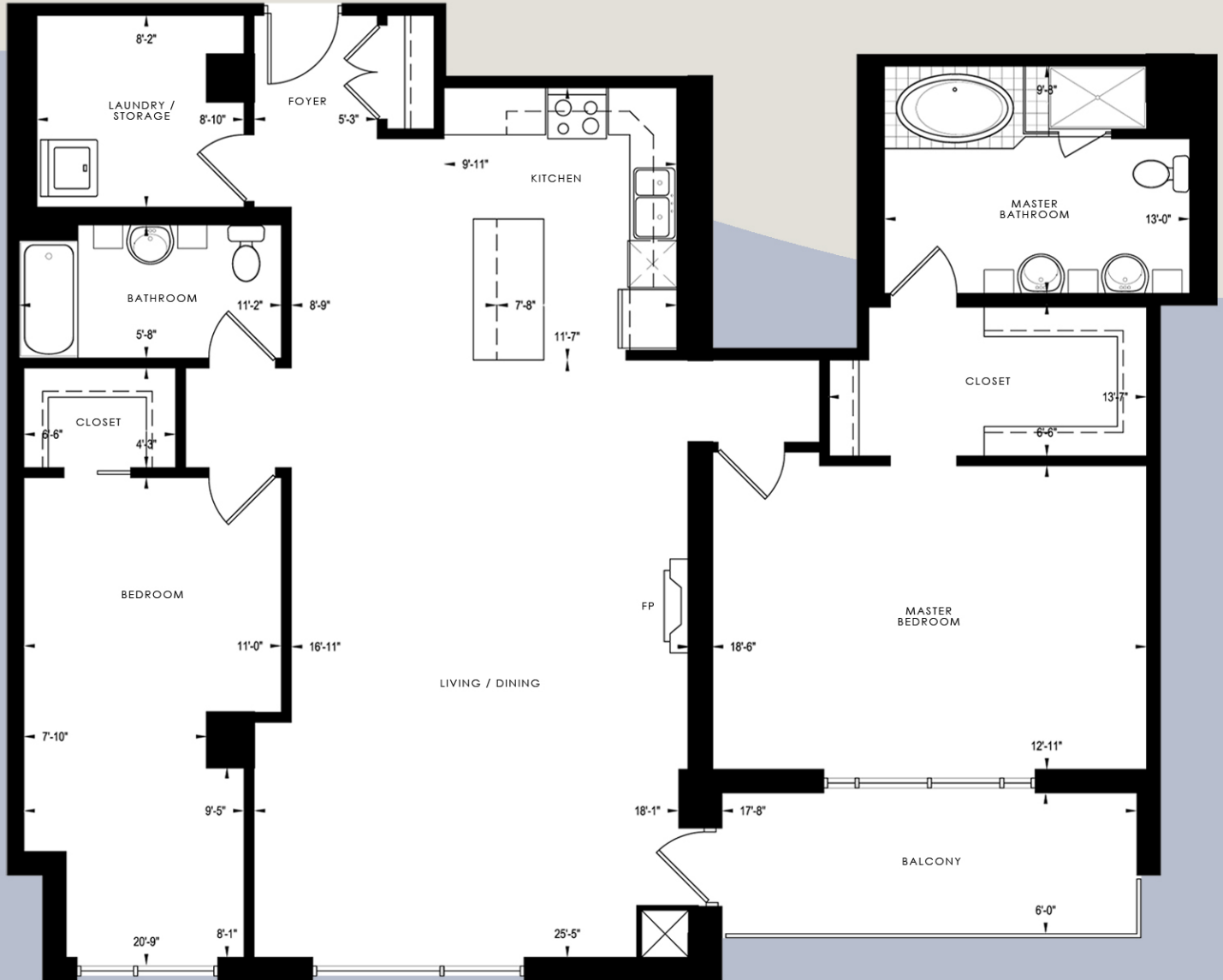


# THE PASQUALE WATERFRONT PLACE

## THE CALABRIA RESIDENTIAL LEVELS 3 - 7

2 Bedroom, 2 Bath  
Living: 1,715 square feet

"The Toe of Italy" - Calabria is the heart of the Mezzogiorno, which stands for the baking sunshine in which the region basks. It is characterized by rugged mountains, small villages, untouched sandy beaches and sapphire blue seas. The contrasts and purity of the landscape make a home to create new adventures and new memories.



**Note:** Floor Plans are not to scale. Actual usable floor area may vary from the stated floor area. All dimensions are approximate and subject to normal construction variances and tolerances. The Complete offering terms are in an Offering Plan available from Sponsor. File No. CD070334.

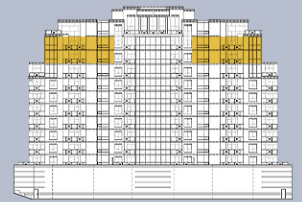
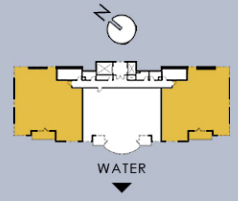
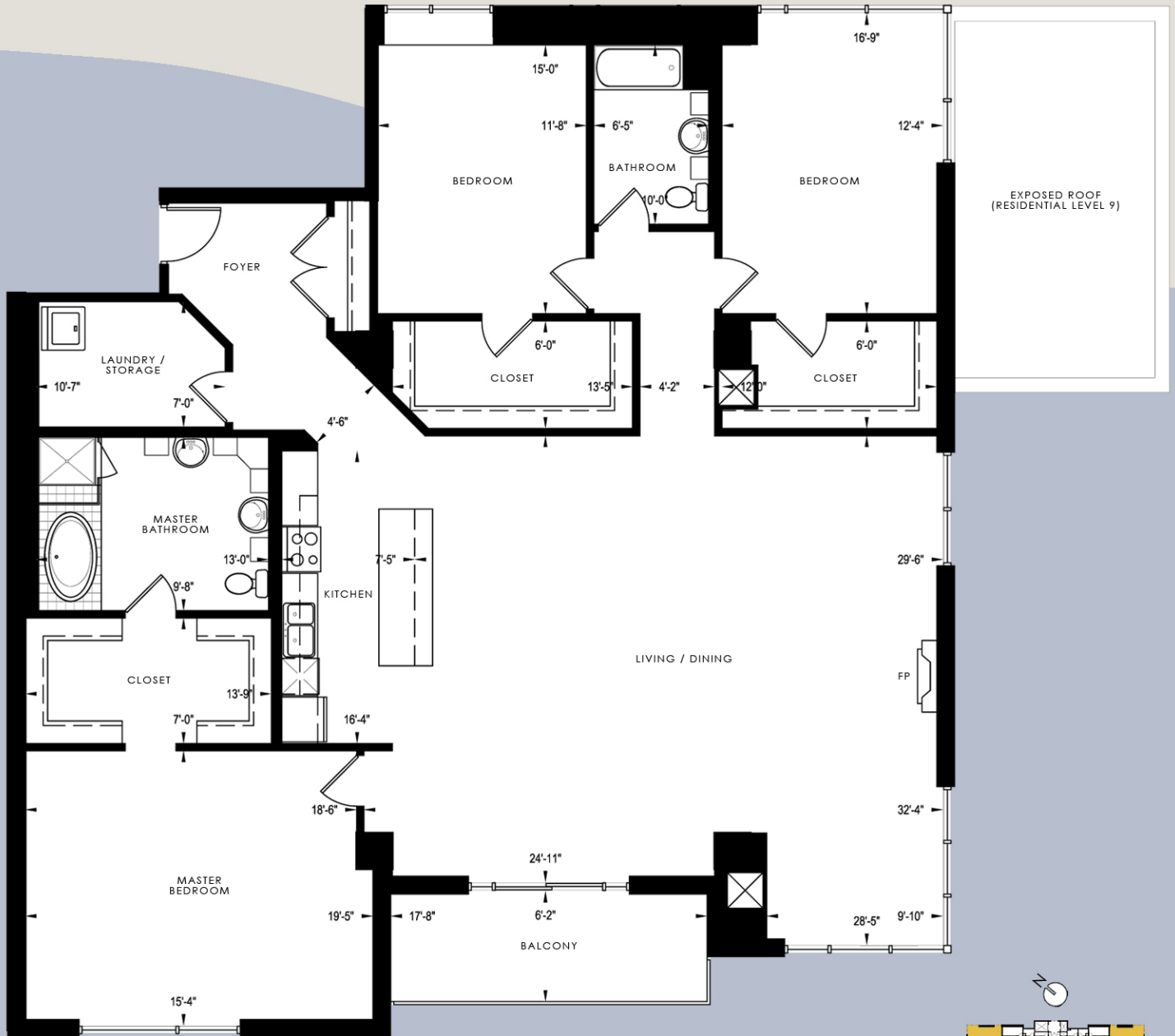


# THE PASQUALE WATERFRONT PLACE

## THE CAMPOMARINO RESIDENTIAL LEVEL 9 & 10

3 Bedroom, 2 Bath  
Living: 2,572 square feet

Campomarino overlooks the Adriatic Sea. It is a city that's been through numerous hardships but always rebuilds itself stronger and better than before. From sunrise to sunset, this home is filled with the history of the past blending with the trends of the future. A life of peaceful serenity and captivating beauty awaits.



**Note:** Floor Plans are not to scale. Actual usable floor area may vary from the stated floor area. All dimensions are approximate and subject to normal construction variances and tolerances. The Complete offering terms are in an Offering Plan available from Sponsor. File No. CD070334.

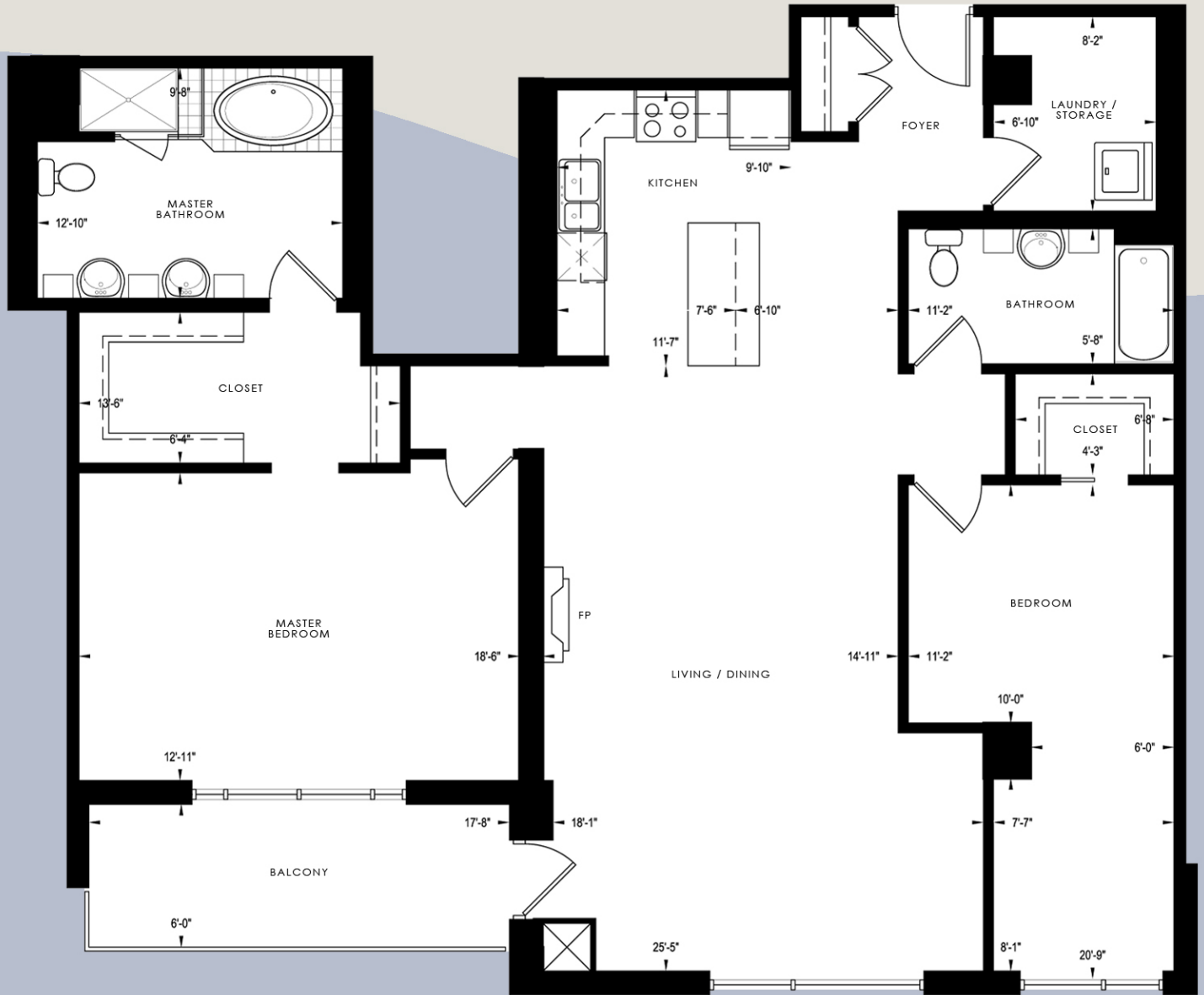


# THE PASQUALE WATERFRONT PLACE

## THE MESSINA RESIDENTIAL LEVELS 3 - 7

2 Bedroom, 2 Bath  
Living: 1,641 square feet

Part of the Strait of Messina, this seaside city is situated on a beautiful hilly coastline. The strait's rocks, currents, and whirlpools may have been the inspiration for many historical legends. Its colorful history and captivating beauty come together to create a home like no other.



**Note:** Floor Plans are not to scale. Actual usable floor area may vary from the stated floor area. All dimensions are approximate and subject to normal construction variances and tolerances. The Complete offering terms are in an Offering Plan available from Sponsor. File No. CD070334.

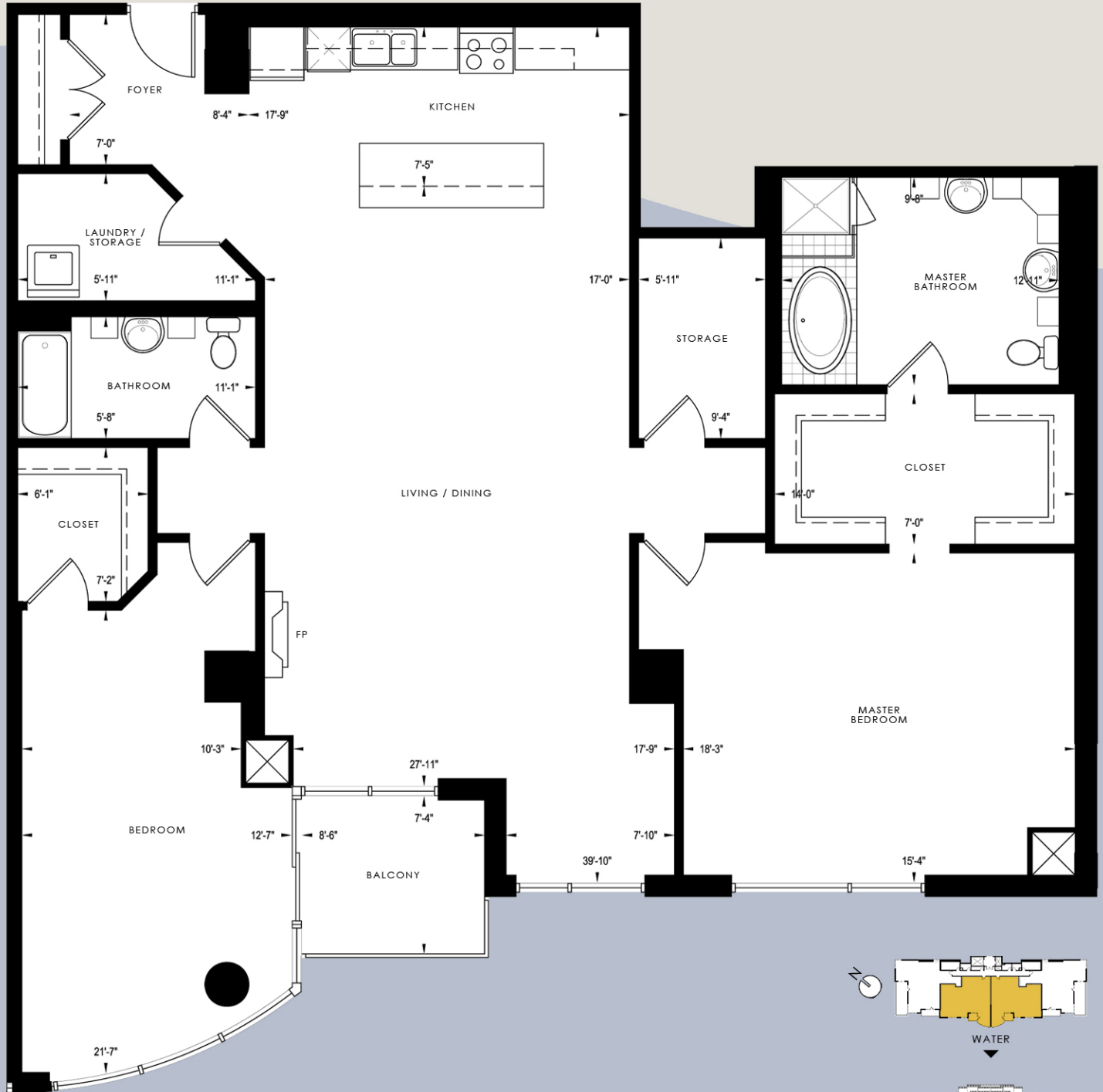


# THE PASQUALE WATERFRONT PLACE

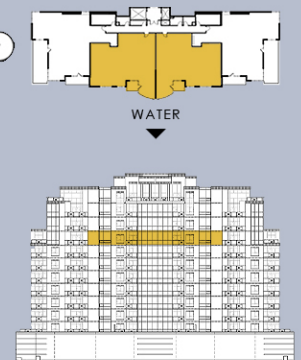
## THE MILANO RESIDENTIAL LEVEL 8

2 Bedroom, 2 Bath  
Living: 1,968 square feet

"A city that is always one step ahead." Milan is known as the world capital of design and fashion. The energy of the city often hides its rich artistic, cultural and historical heritage. This is a home on the cutting edge of design and architectural jewels that are incorporated within a pleasure-seeking atmosphere.



**Note:** Floor Plans are not to scale. Actual usable floor area may vary from the stated floor area. All dimensions are approximate and subject to normal construction variances and tolerances. The Complete offering terms are in an Offering Plan available from Sponsor. File No. CD070334.



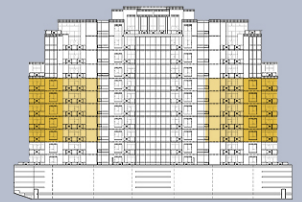
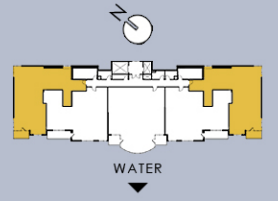
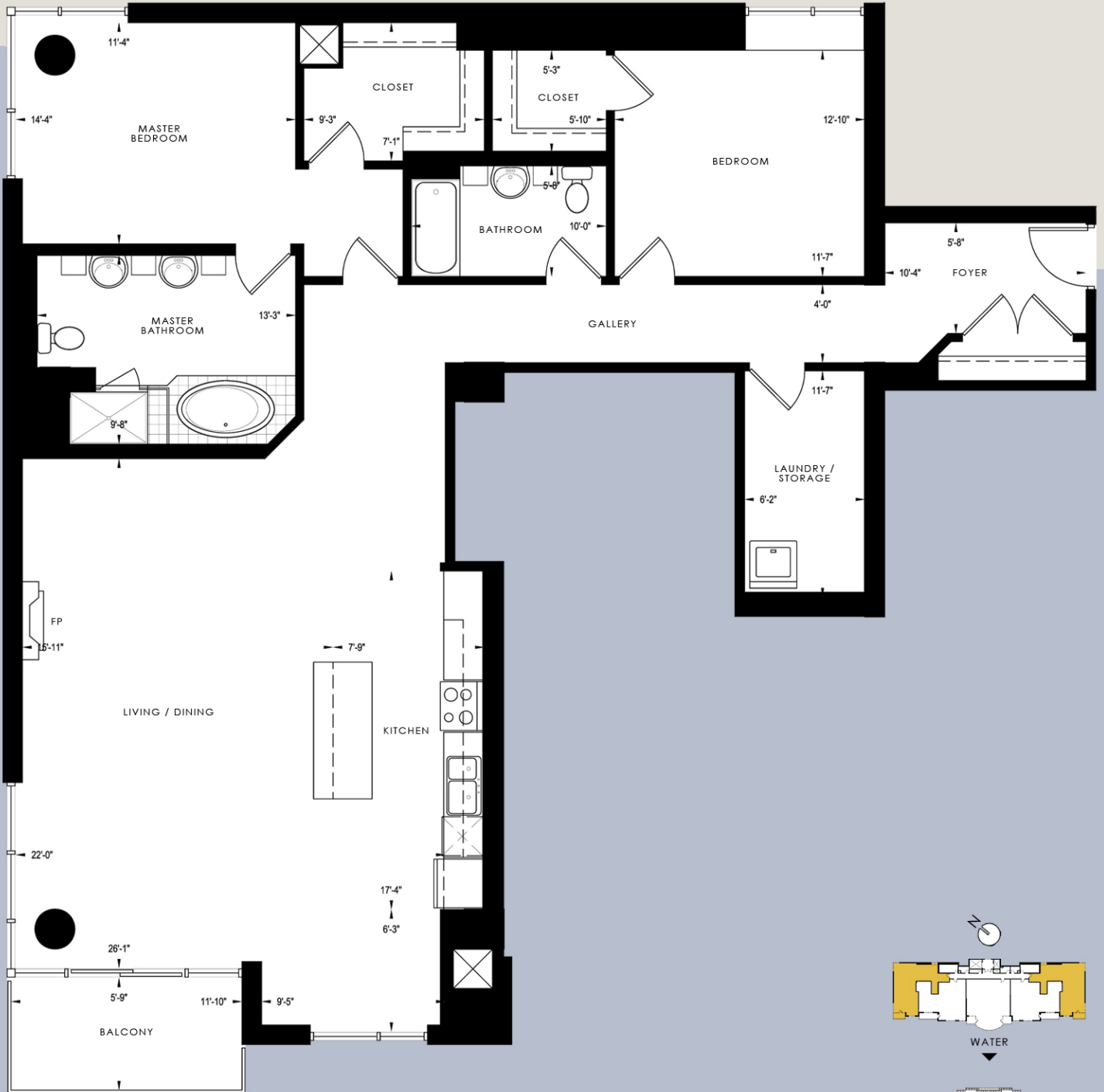


# THE PASQUALE WATERFRONT PLACE

## THE MURANO RESIDENTIAL LEVELS 3 - 7

2 Bedroom, 2 Bath  
Living: 1,844 square feet

The city of Murano is a picturesque island in the Venetian Lagoon known for its glassmaking. Taking a moment to enjoy your surroundings, a feeling of elation and paradise would surely arise. Delicacy, creativity and history blend together to make a captivating piece of artwork that you can call home.



**Note:** Floor Plans are not to scale. Actual usable floor area may vary from the stated floor area. All dimensions are approximate and subject to normal construction variances and tolerances. The Complete offering terms are in an Offering Plan available from Sponsor. File No. CD070334.

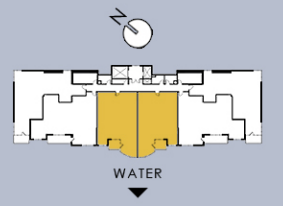
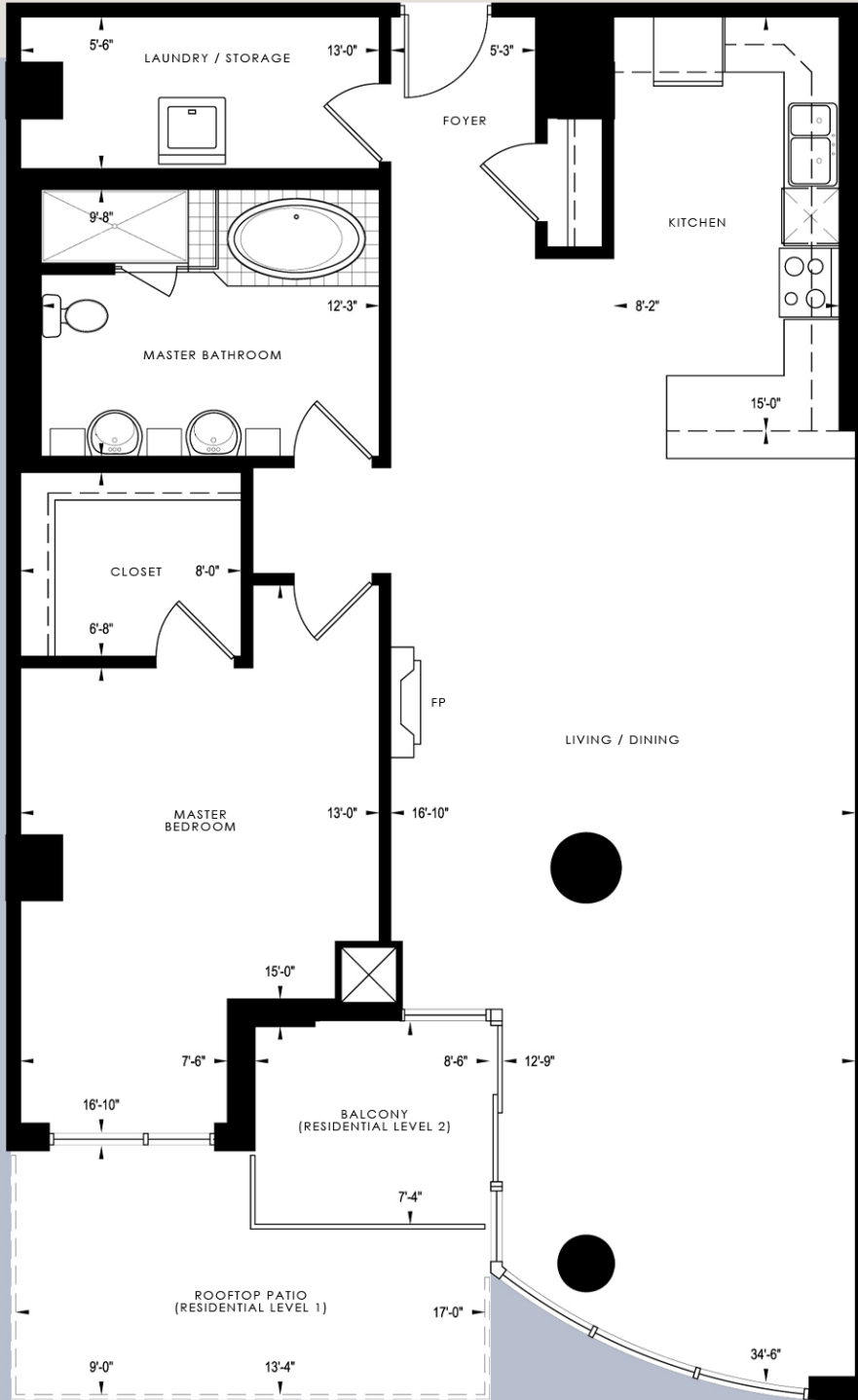


# THE PASQUALE WATERFRONT PLACE

## THE NAPOLI RESIDENTIAL LEVELS 1 & 2

1 Bedroom, 1 Bath  
Living: 1,342 square feet

"Lively, sassy and simply unforgettable." A city, a home, a life that offers the sounds of the water and the aroma of fresh air that will capture your attention, win you over and take your breath away.



**Note:** Floor Plans are not to scale. Actual usable floor area may vary from the stated floor area. All dimensions are approximate and subject to normal construction variances and tolerances. The Complete offering terms are in an Offering Plan available from Sponsor. File No. CD070334.



# THE PASQUALE

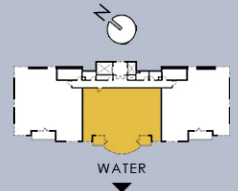
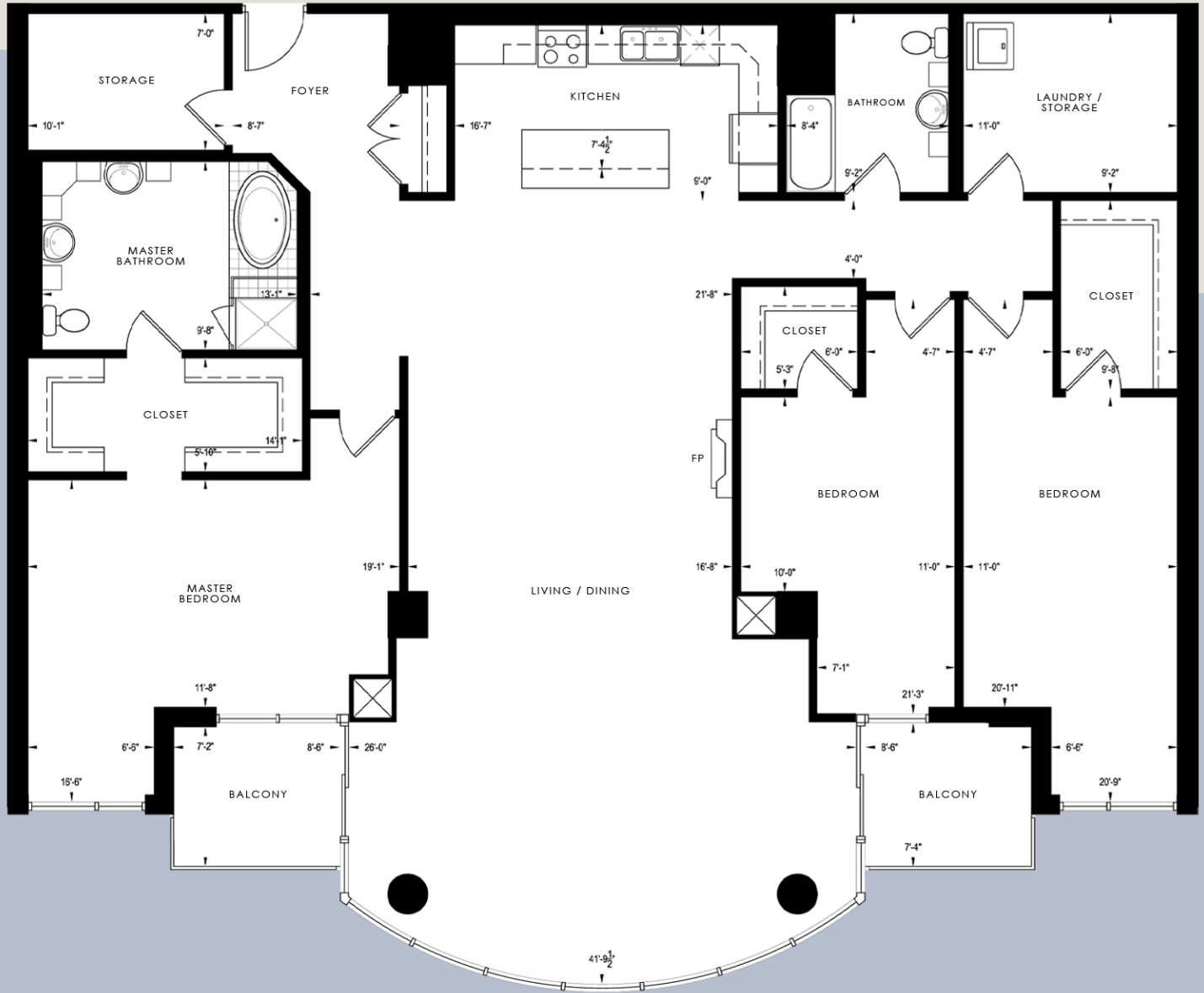
WATERFRONT PLACE

## THE PORTO ROTONDO

RESIDENTIAL LEVEL 9 & 10

3 Bedroom, 2 Bath  
Living: 2,622 square feet

The sky blue water of the island makes picture perfect views. Porto Rotondo is home to luxurious beaches, friendly people and exquisite food. A home with cool breeze on hand, life here is relaxed and at ease.



**Note:** Floor Plans are not to scale. Actual usable floor area may vary from the stated floor area. All dimensions are approximate and subject to normal construction variances and tolerances. The Complete offering terms are in an Offering Plan available from Sponsor. File No. CD070334.





# THE PASQUALE

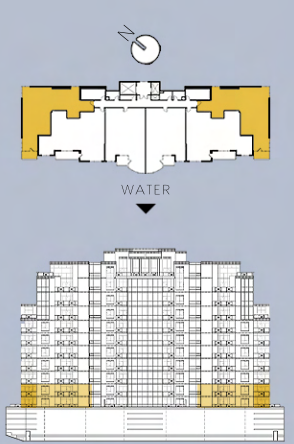
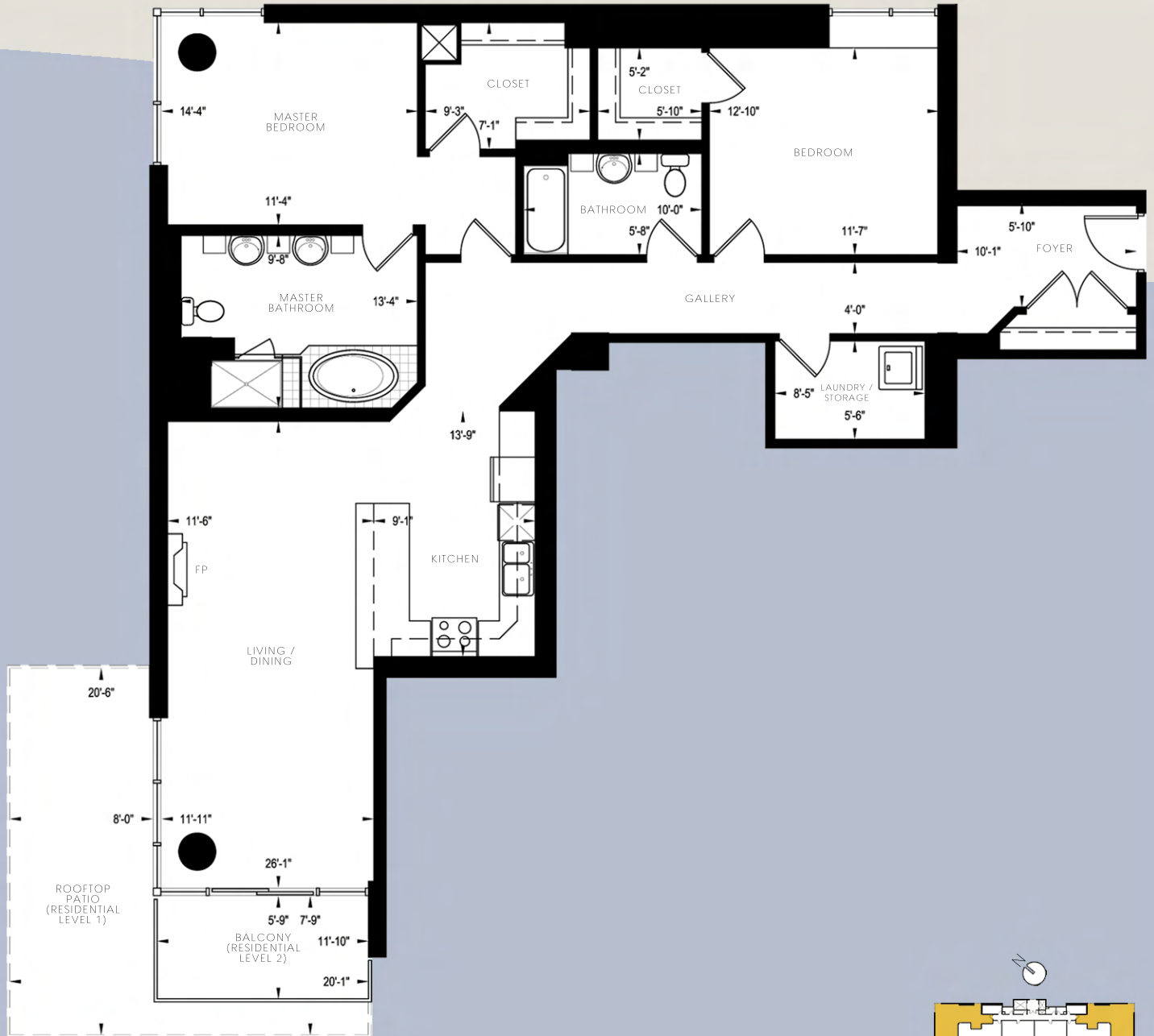
WATERFRONT PLACE

## THE ROMA

RESIDENTIAL LEVELS 1 & 2

2 Bedroom, 2 Bath  
Living: 1,583 square feet

"La Citta Eterna" – The Eternal City. The Eternal City was encompassed by the hidden treasures of Emperors, Masterpieces and breathtaking sunsets. Embrace yourself by having the beauty of an artistic and architectural masterpiece that you can call home.



**Note:** Floor Plans are not to scale. Actual usable floor area may vary from the stated floor area. All dimensions are approximate and subject to normal construction variances and tolerances. The Complete offering terms are in an Offering Plan available from Sponsor. File No. CD070334.



# THE PASQUALE

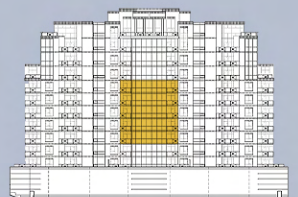
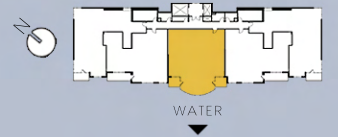
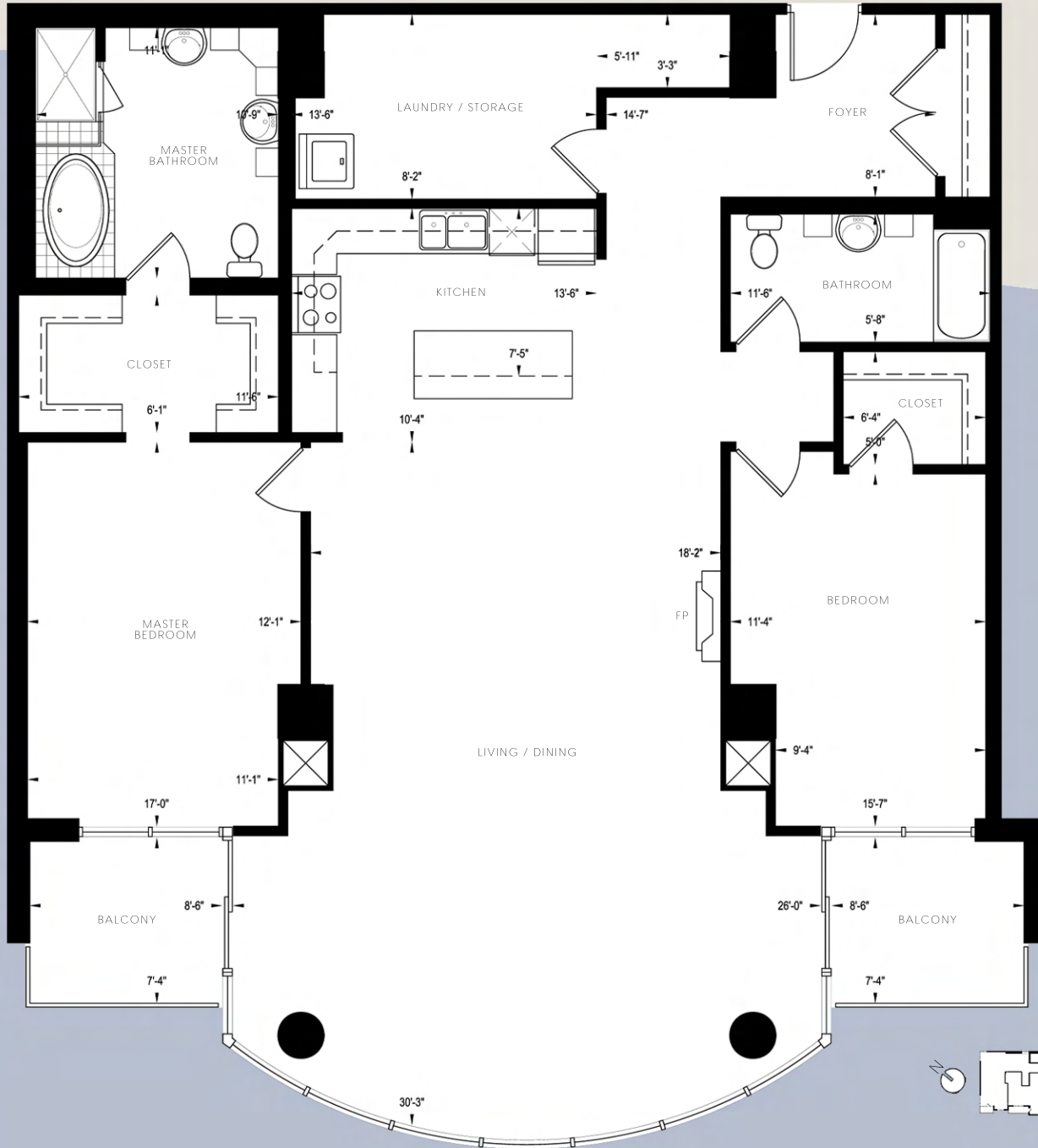
WATERFRONT PLACE

## THE UMBRIA

RESIDENTIAL LEVELS 3 - 7

2 Bedroom, 2 Bath  
Living: 1,939 square feet

Umbria, the heart of Italy, is world famous for its jazz. Its rich arts and culture blend together with the essence and flavors of the city to create a comfortable setting of tradition. Discover a home that is filled with the magic of Umbria.



**Note:** Floor Plans are not to scale. Actual usable floor area may vary from the stated floor area. All dimensions are approximate and subject to normal construction variances and tolerances. The Complete offering terms are in an Offering Plan available from Sponsor. File No. CD070334.

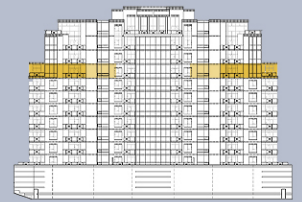
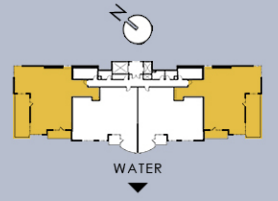
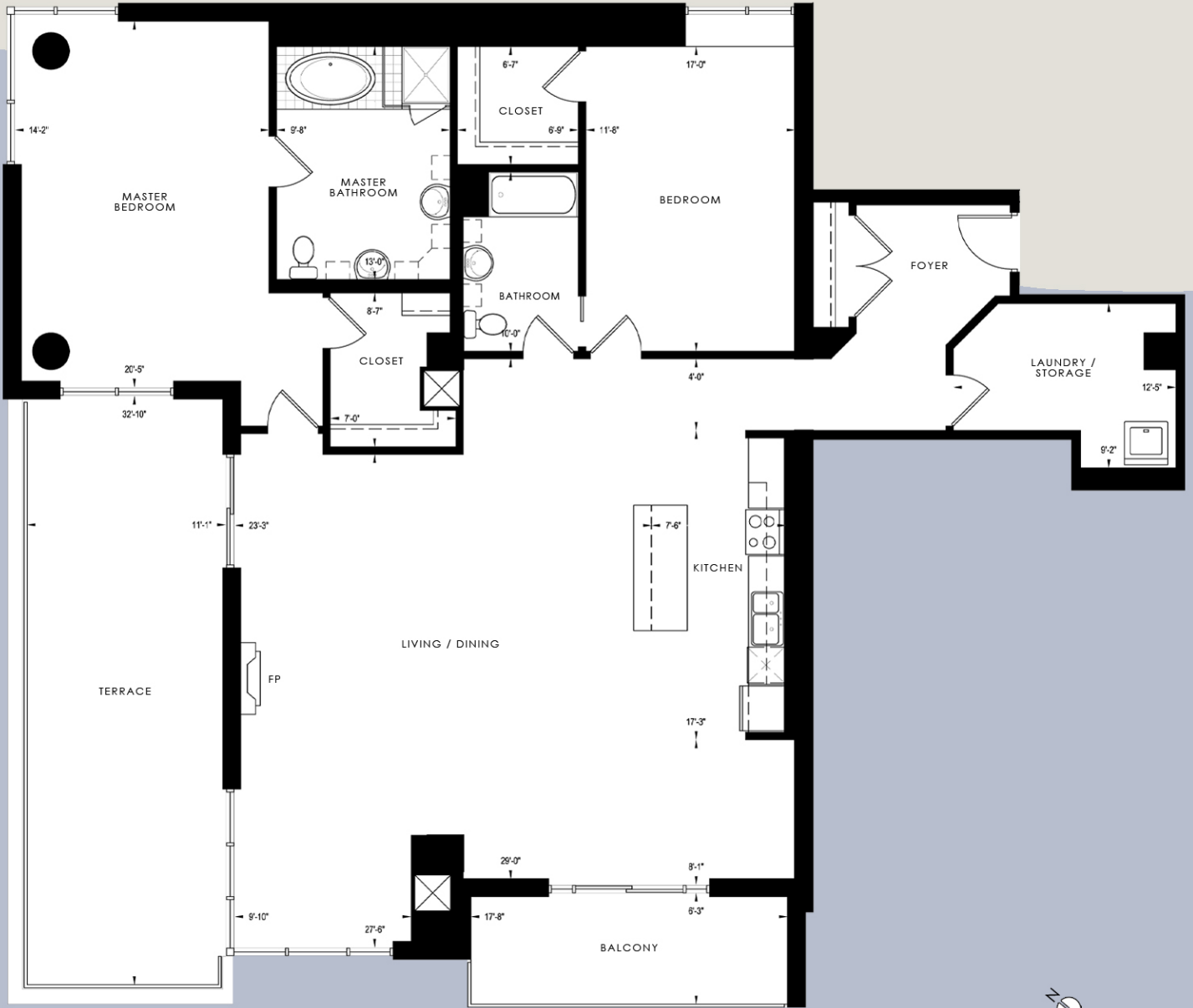


# THE PASQUALE WATERFRONT PLACE

## THE VENEZIA RESIDENTIAL LEVEL 8

2 Bedroom, 2 Bath  
Living: 2,185 square feet

"The City of Water" – The city stretches across numerous small islands making the use of water travel essential. The breathtaking beauty of the city can hardly be described by words. The real charm of it is taking your time and enjoying the little things that make this home so unique.



**Note:** Floor Plans are not to scale. Actual usable floor area may vary from the stated floor area. All dimensions are approximate and subject to normal construction variances and tolerances. The Complete offering terms are in an Offering Plan available from Sponsor. File No. CD070334.